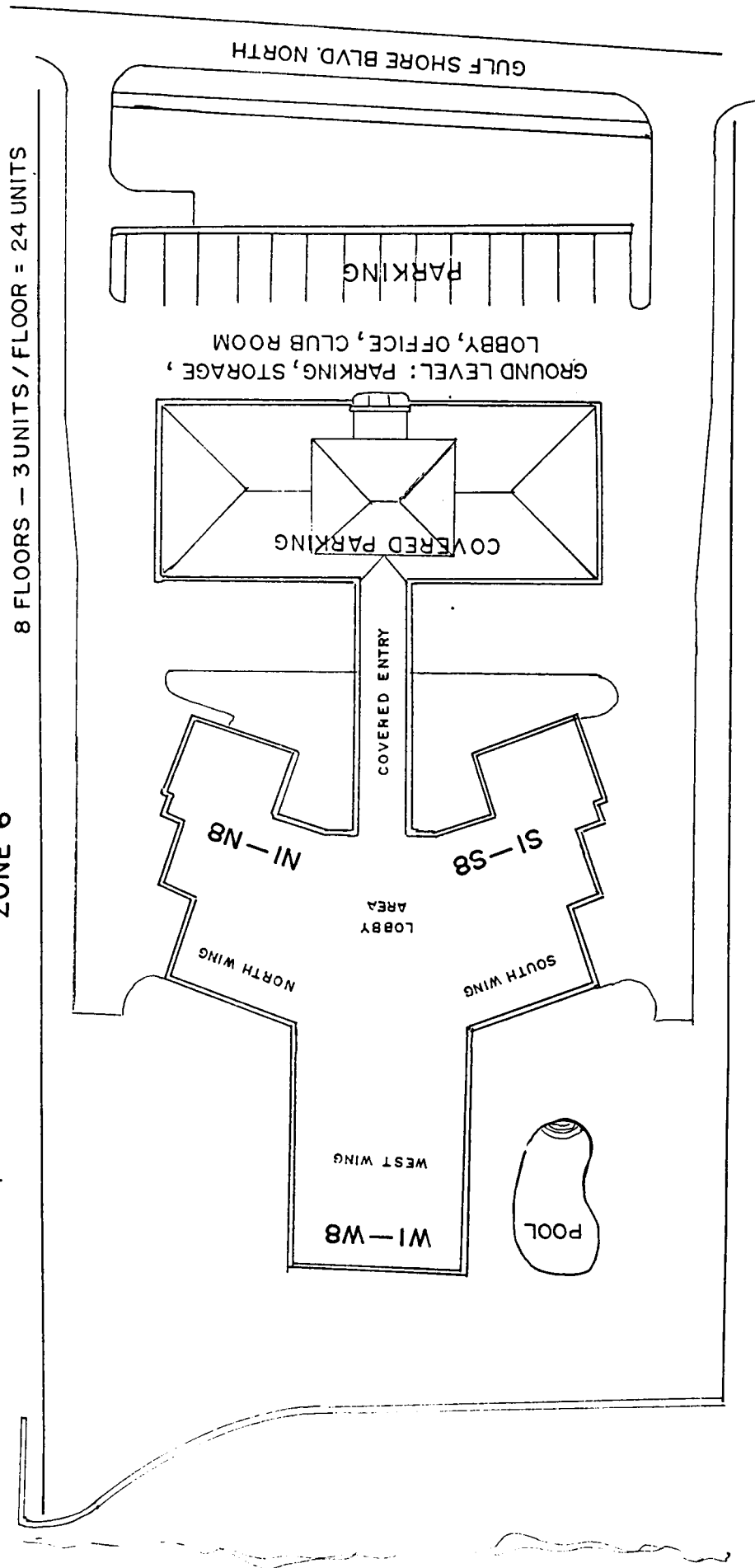


GRAMERCY

2777 GULF SHORE BLVD. NORTH

ZONE 6

8 FLOORS - 3 UNITS / FLOOR = 24 UNITS



GULF OF MEXICO

GULF SHORE BLVD. NORTH

PARKING

GROUND LEVEL: PARKING, STORAGE,
LOBBY, OFFICE, CLUB ROOM

COVERED PARKING

COVERED ENTRY

N1-N8

S1-S8

LOBBY
AREA

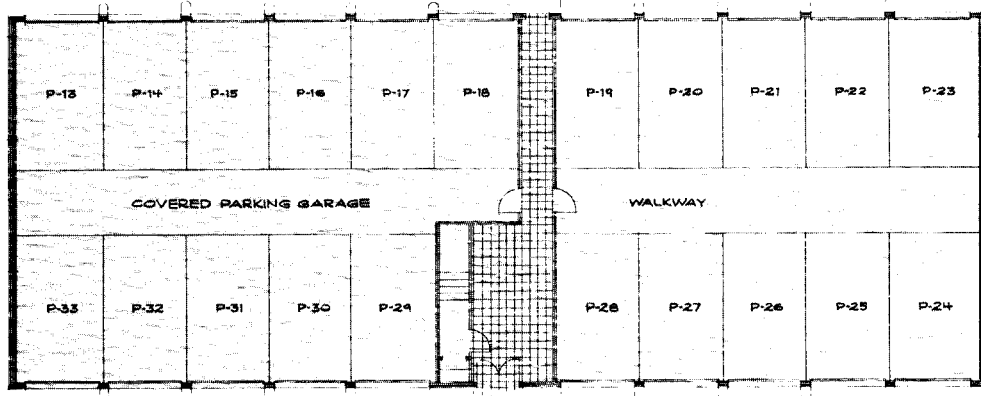
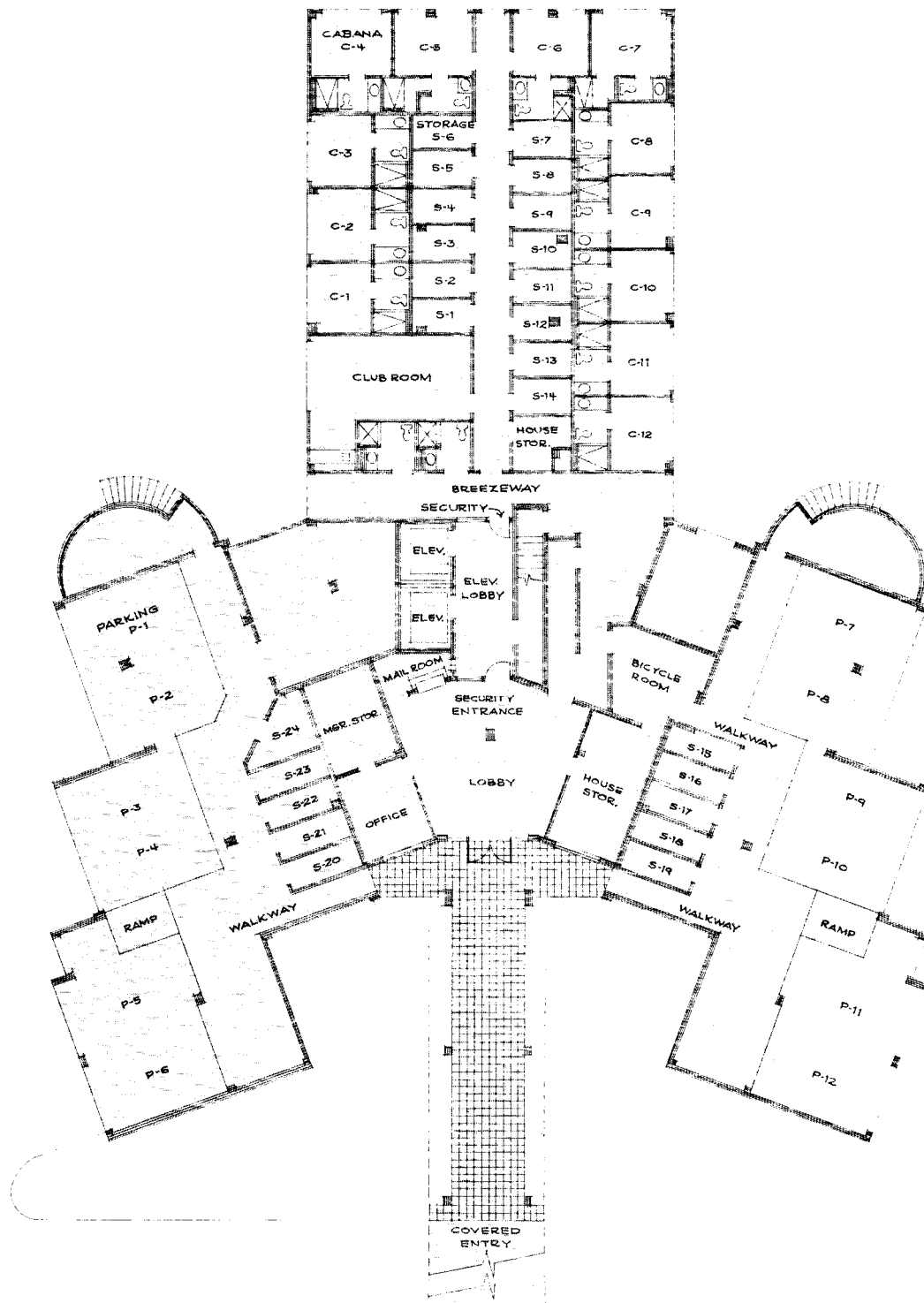
NORTH WING

SOUTH WING

WEST WING

W1-W8

POOL



ELECTRIC OPERATED DOORS
GROUND FLOOR PLAN