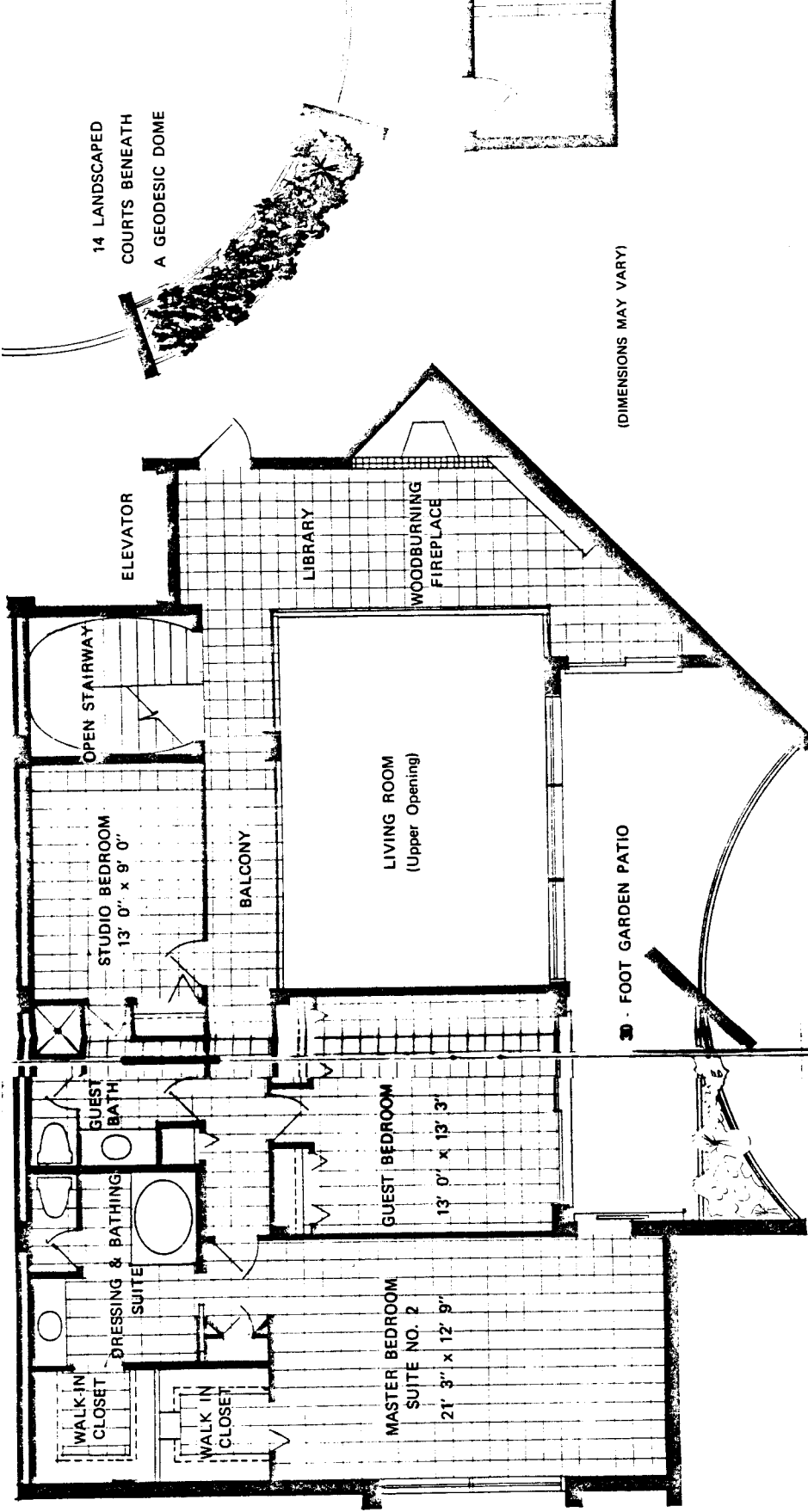
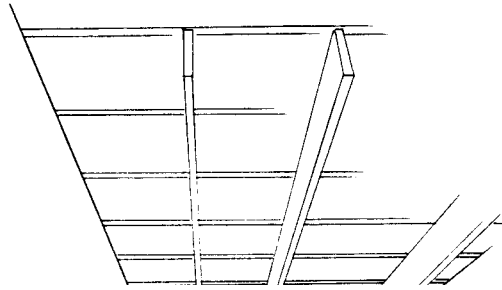


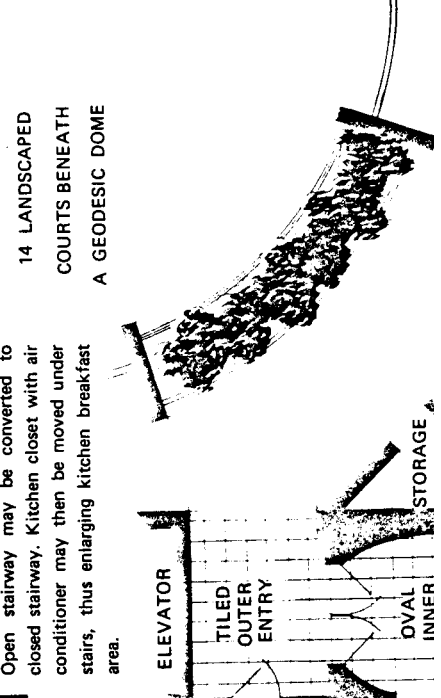
Horizon House

ences, tallest and finest ever
 d to match their spectacular
 usness . . . that will be your
 d through the gated court
 nificance of the living room
 ries of glass.

replace cheerfully crackling



14 LANDSCAPED
 COURTS BENEATH
 A GEODESIC DOME

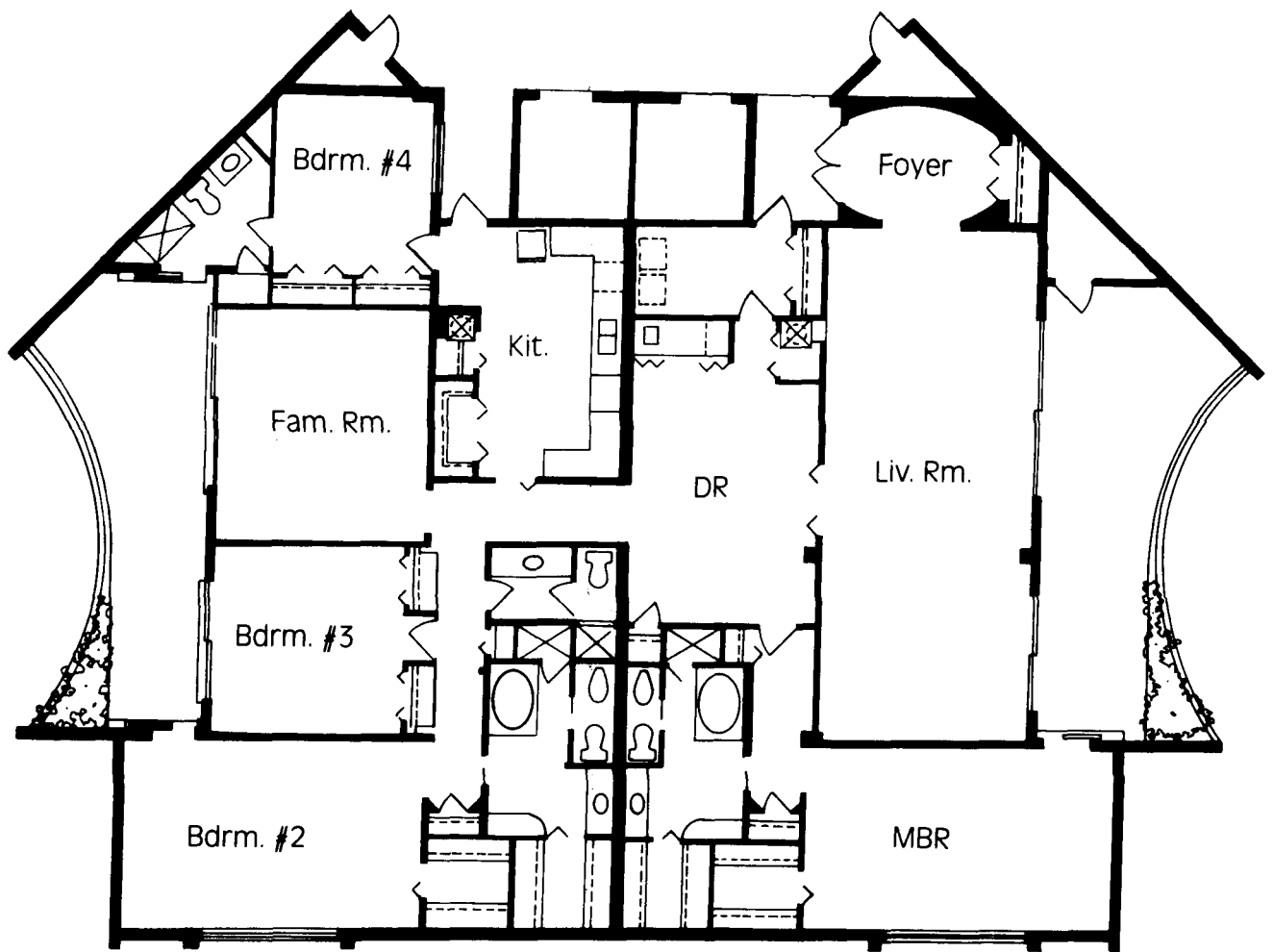


14 LANDSCAPED
 COURTS BENEATH
 A GEODESIC DOME

TWO STOREY Penthouse

ntthouse Plan

ed patio together with the
 pace to absorb a crowd . . .
 arsize kitchen with General
 ooks roasts in minutes . . . 23
 with door-mounted cube



THE SPECIFICATIONS:

Four bedrooms, four baths plus family room. Garage, and extra storage.

Square Footage:

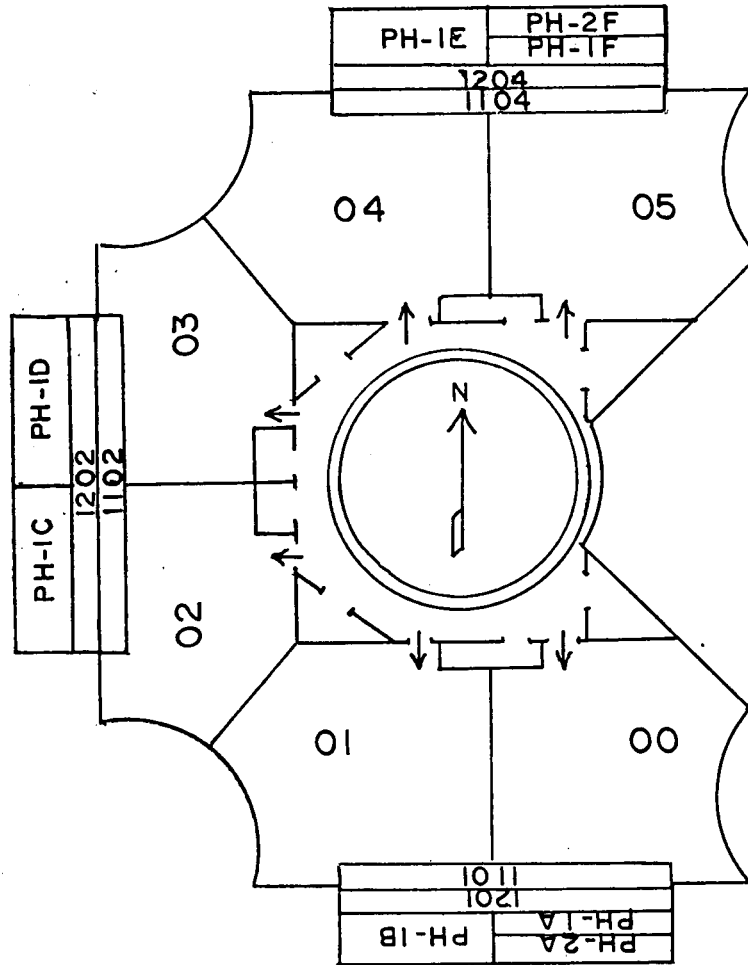
- Living Area: 3540
- Total Area: 4094
- Floors: Carpet, marble, & Mexican tile
- Appliances: Double oven, refrigerator w/icemaker on door, disposal, dishwasher, washer/dryer
- Location: Fourteenth floor
- Storm Shutters
- Bidet & Whirlpool tub
- Parking: Assigned in garage (2 spaces)

HORIZON HOUSE

3951 Gulfshore Blvd. North
ZONE 6

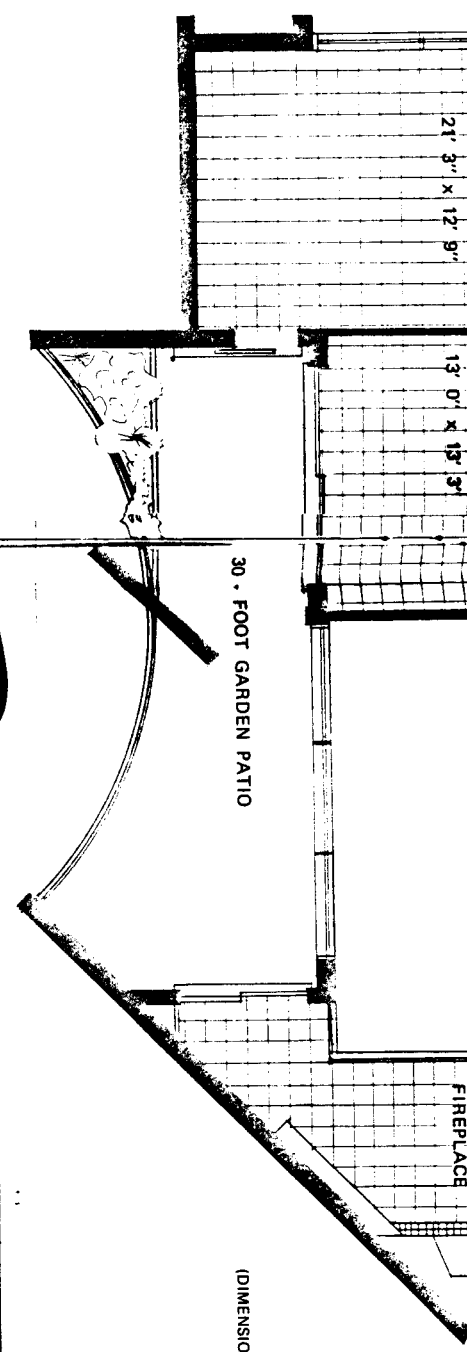
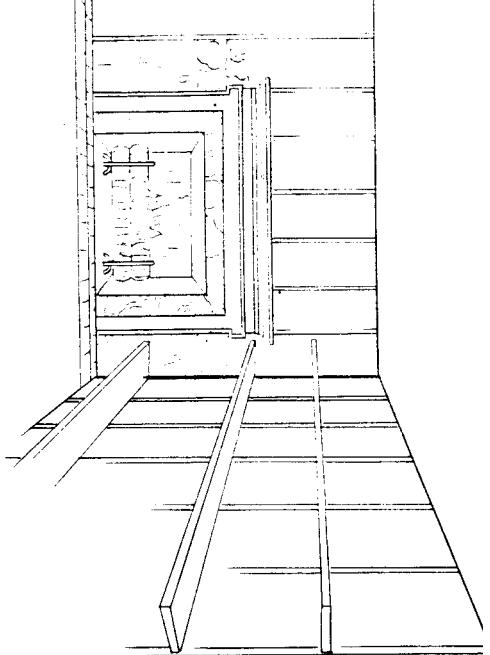


GULF OF MEXICO

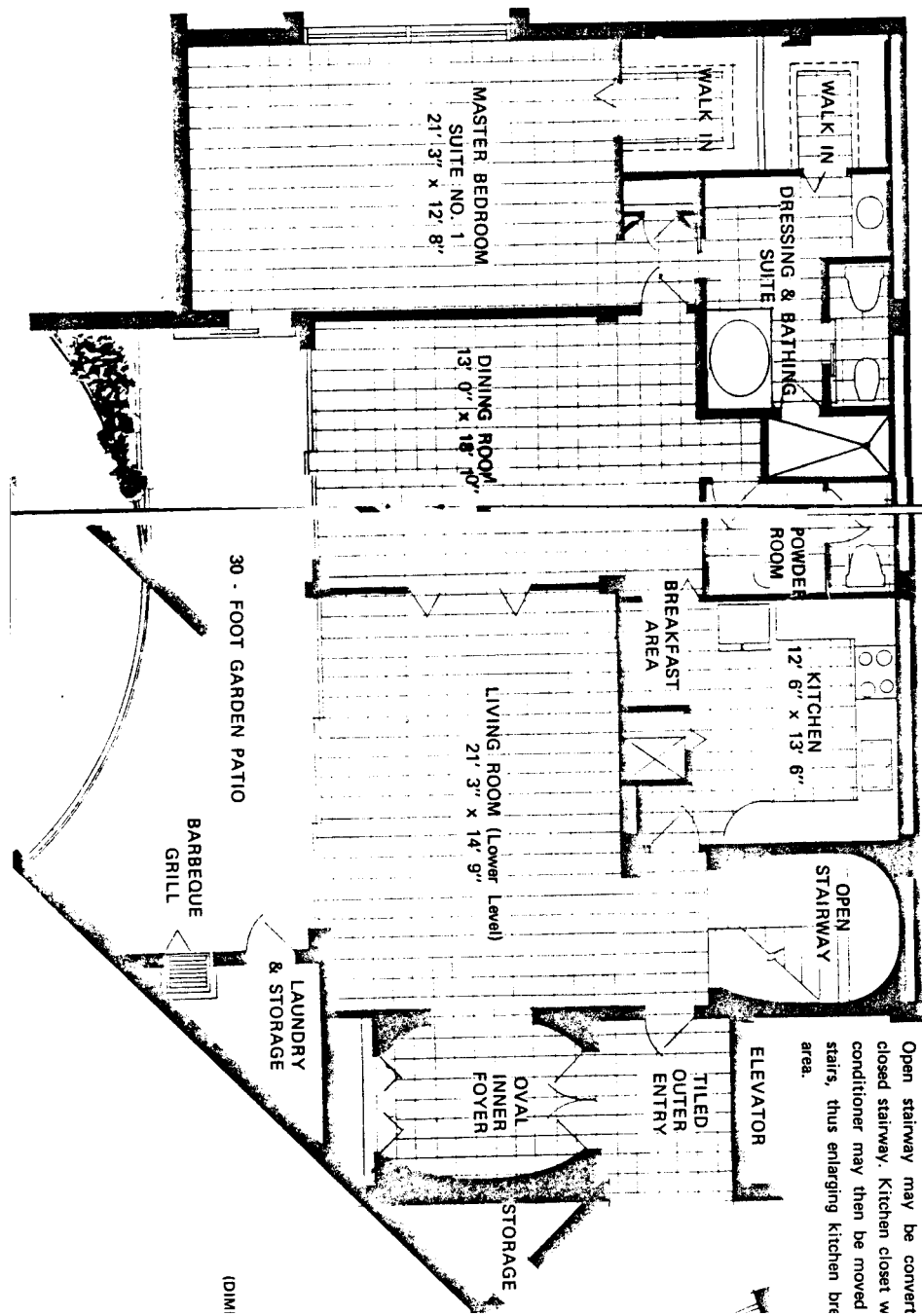


GULF SHORE BLVD. NORTH

HORIZON WAY



TWO STOREY Penthouse



About the Penthouse Plan

formal dining room and landscaped patio together with the living room form entertainment space to absorb a crowd... built-in patio barbeque... oversize kitchen with General Electric veratronic double oven cooks roasts in minutes... 23 cubic foot refrigerator freezer with door-mounted cube dispenser and water chiller... powder room... \$1,200 hardware allowance... open spiral stairway... elevator stops at both floors... second landscaped patio... second master suite with luxuries of lower level suite... we know of nothing in Southwest Florida that equals this "estate-in-the-sky"... space equivalent to two 2-bedroom residences.

Open stairway may be converted to closed stairway. Kitchen closet with built-in conditioner may then be moved to enlarge kitchen fire area.