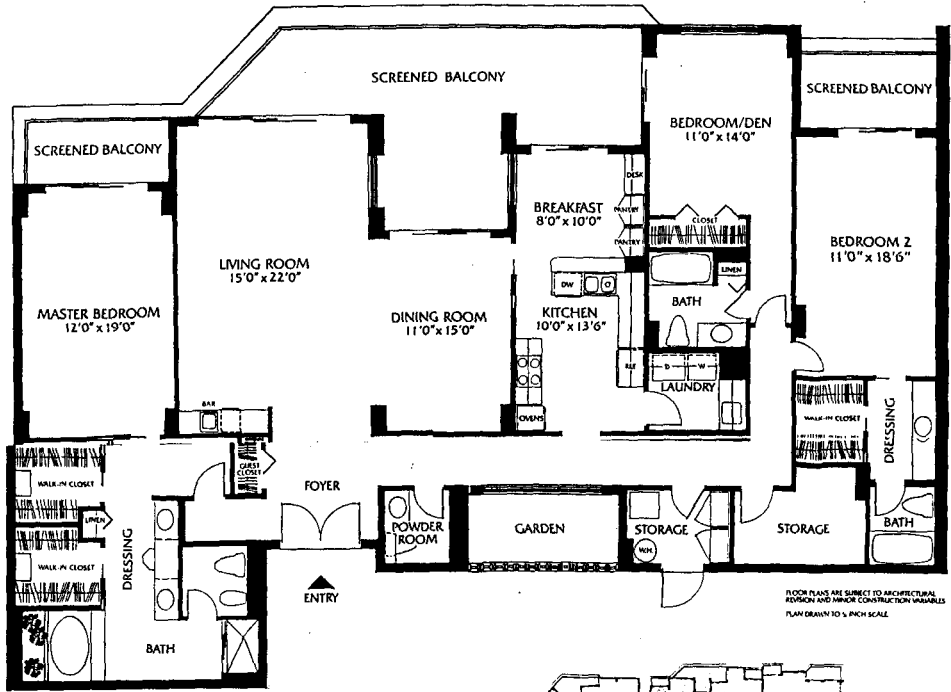
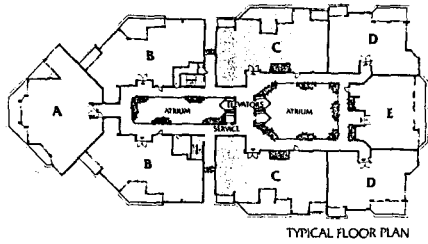


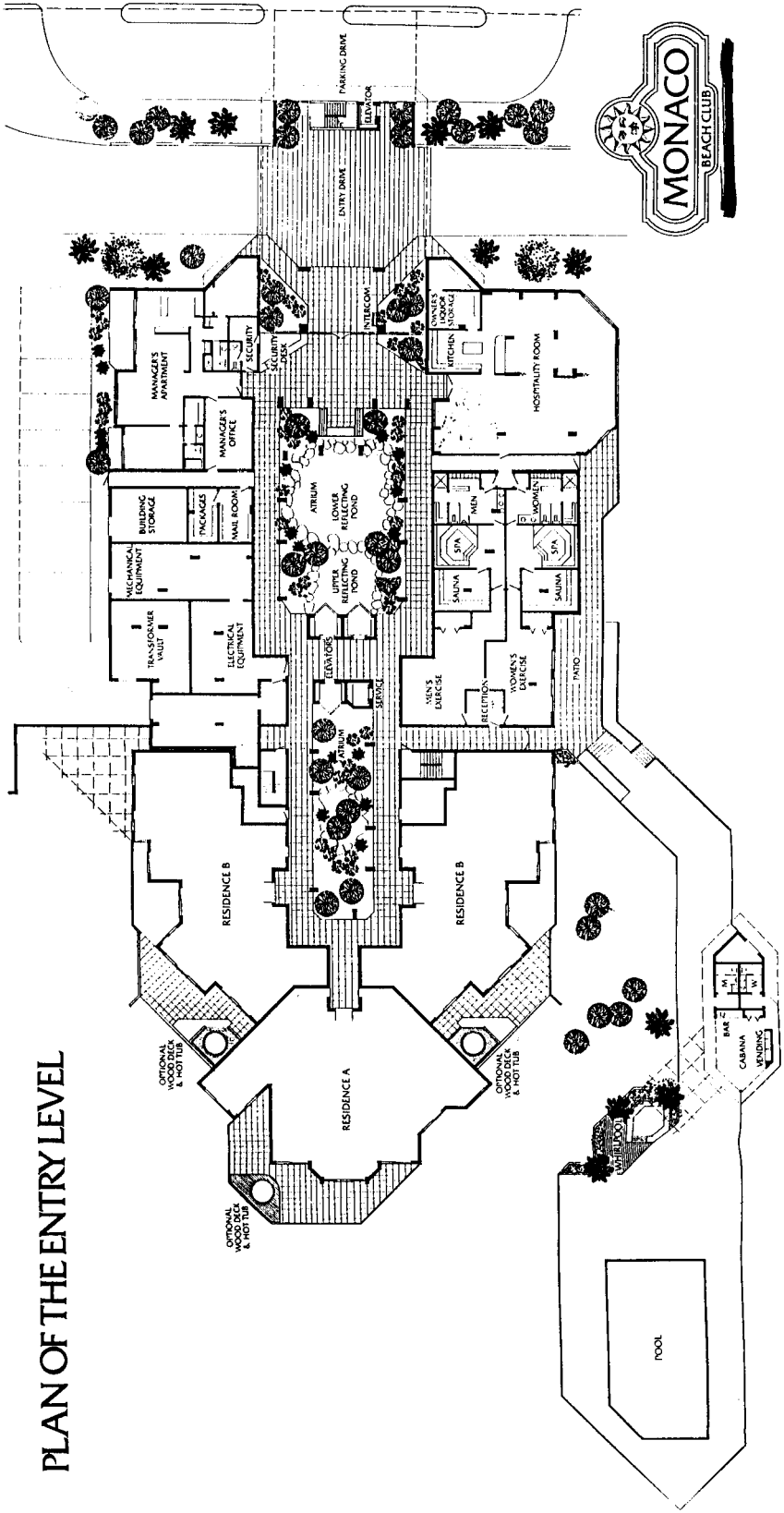
RESIDENCE TYPE C
Three Bedroom, Three & One-half Bath
 APARTMENT 2,553 SQ. FT.
 SCREENED BALCONIES 462 SQ. FT.



FLOOR PLANS ARE SUBJECT TO ARCHITECTURAL
 REVISIONS AND MINOR CONSTRUCTION VARIATIONS.
 PLAN DRAWN TO 1/8" = 1'-0" SCALE.



PLAN OF THE ENTRY LEVEL



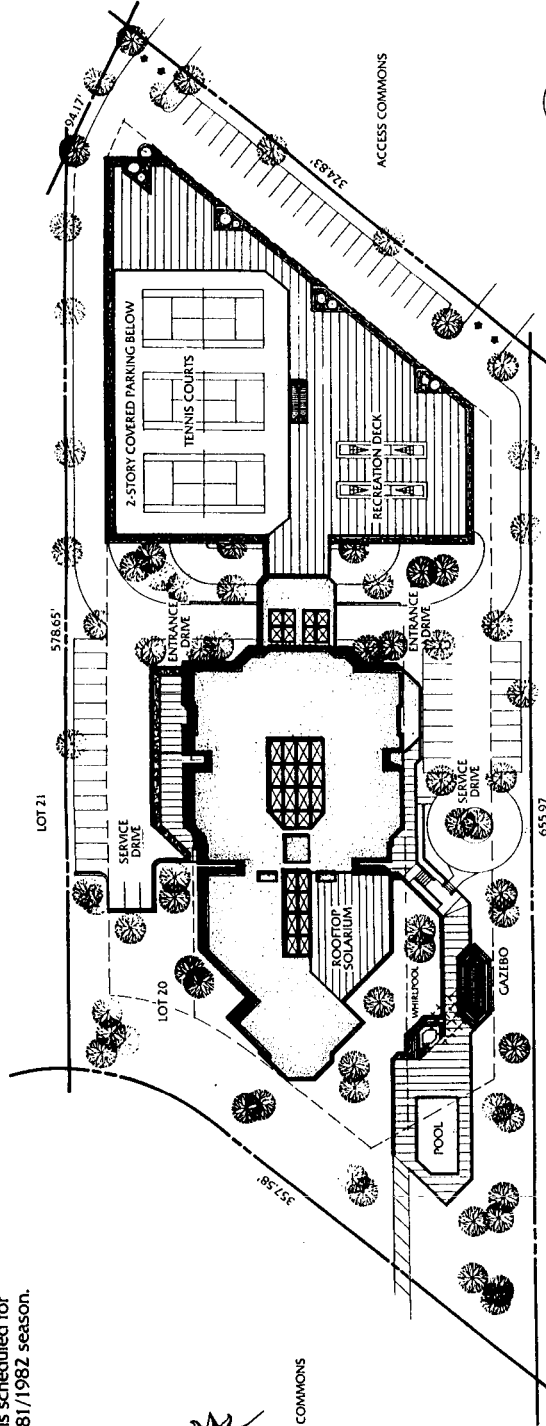
THE SITE PLAN

Our 18-story beachfront, luxury condominium is scheduled for completion for the 1981/1982 season.



BEACH COMMONS

SITE PLAN OF SUBJECT COMPLEX

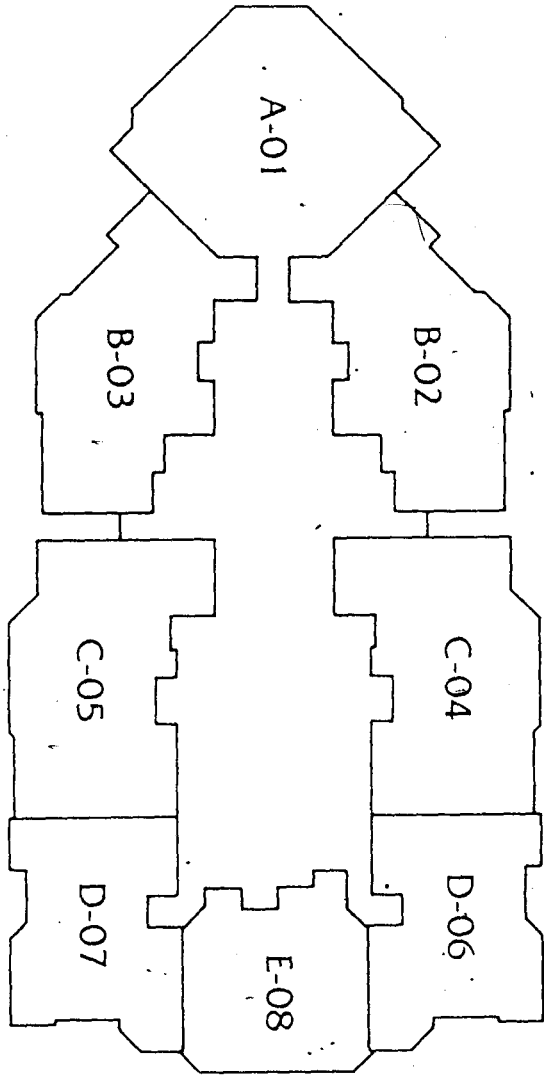


The plan is not to scale. Location of all physical and environmental elements to be determined by actual inspection.

GULF OF MEXICO

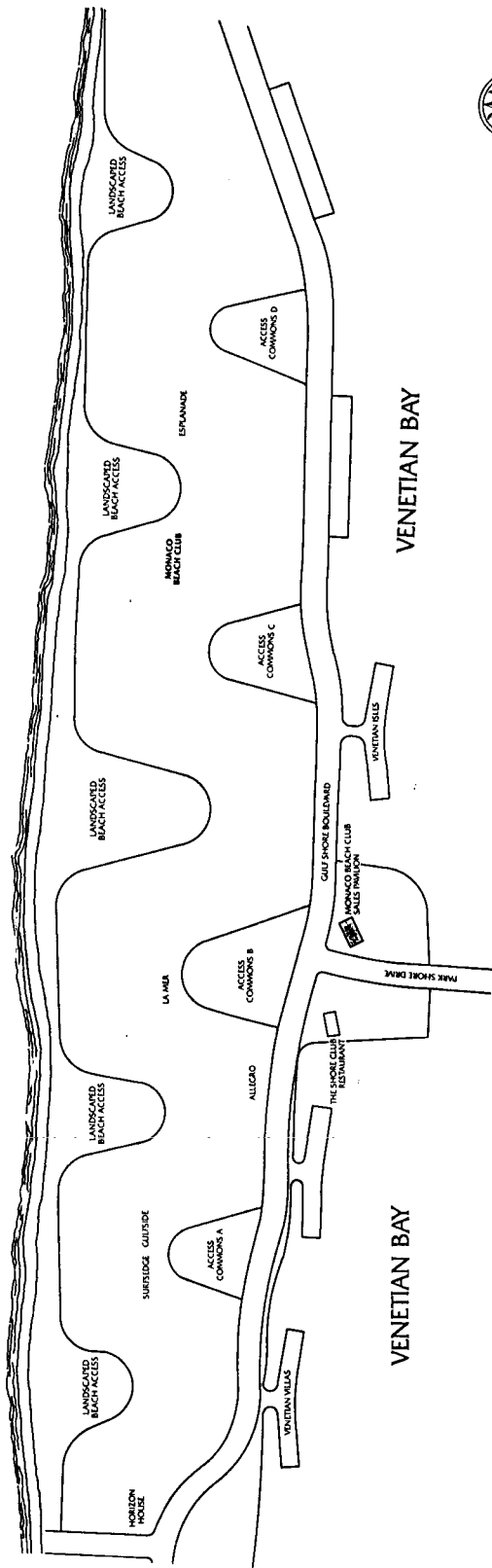


F-100



THE BEACHFRONT PLAN

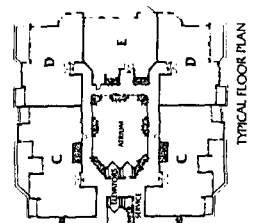
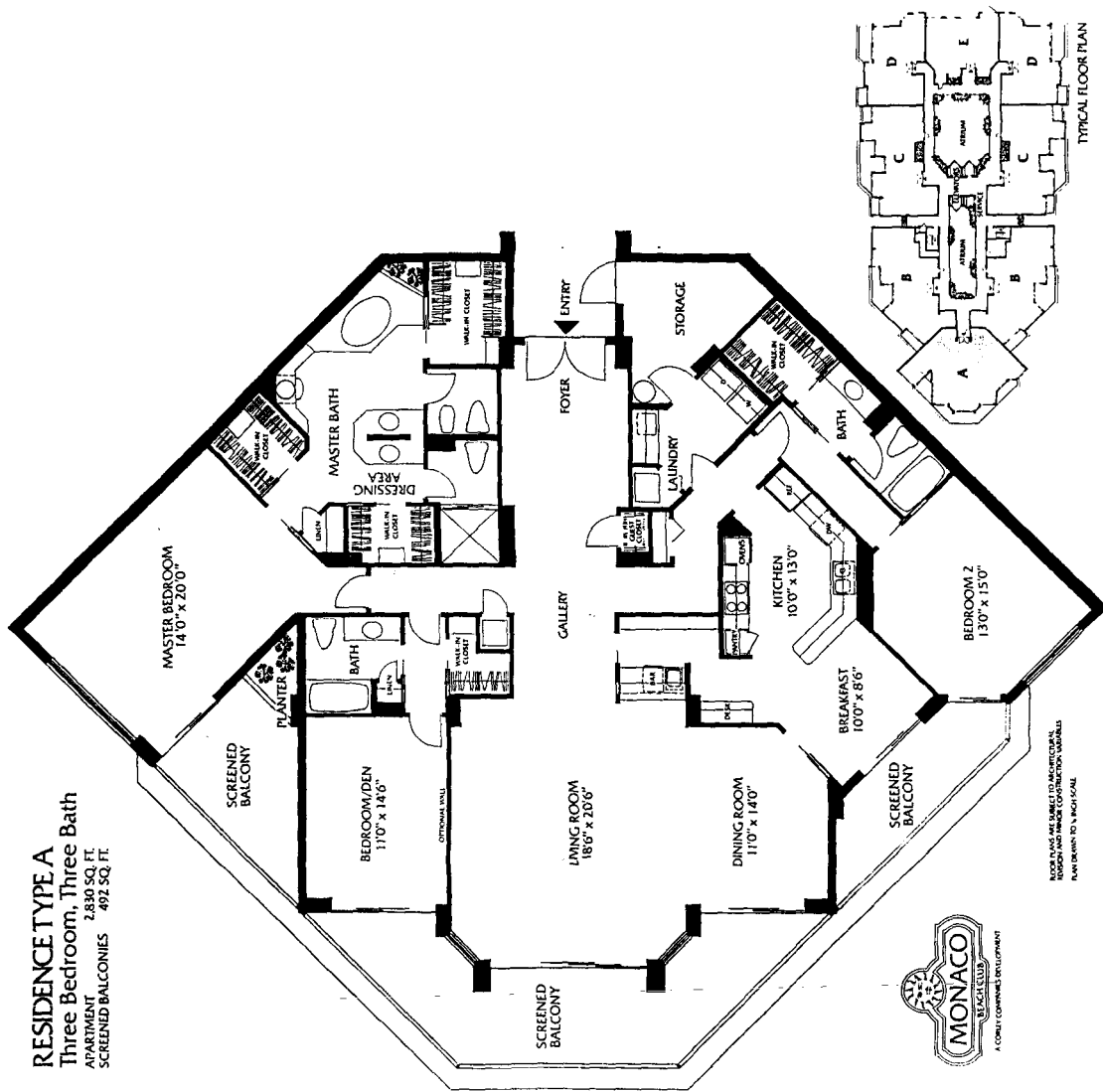
GULF OF MEXICO



TO NAPLES



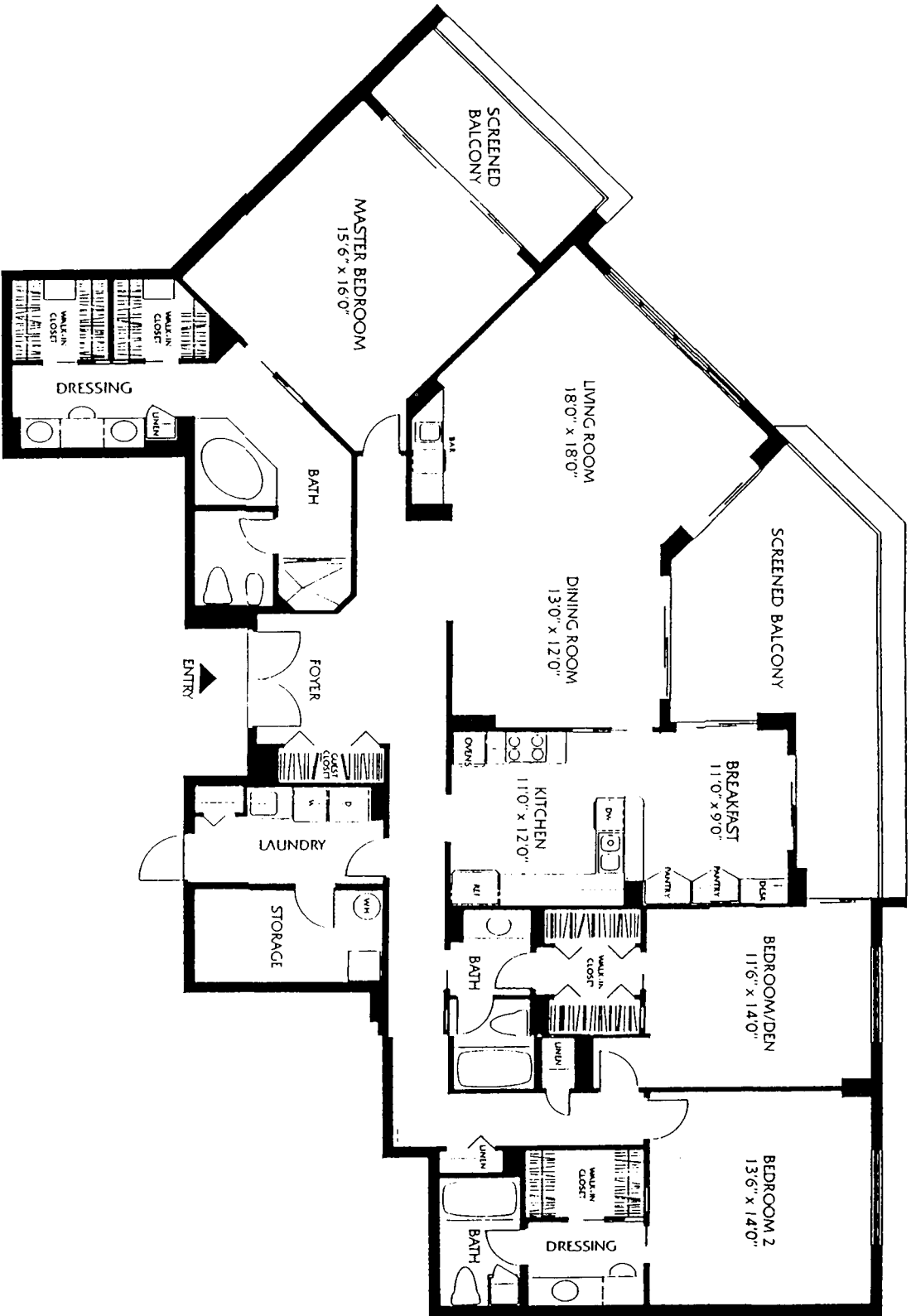
RESIDENCE TYPE A
 Three Bedroom, Three Bath
 APARTMENT 2,830 SQ. FT.
 SCREENED BALCONIES 492 SQ. FT.



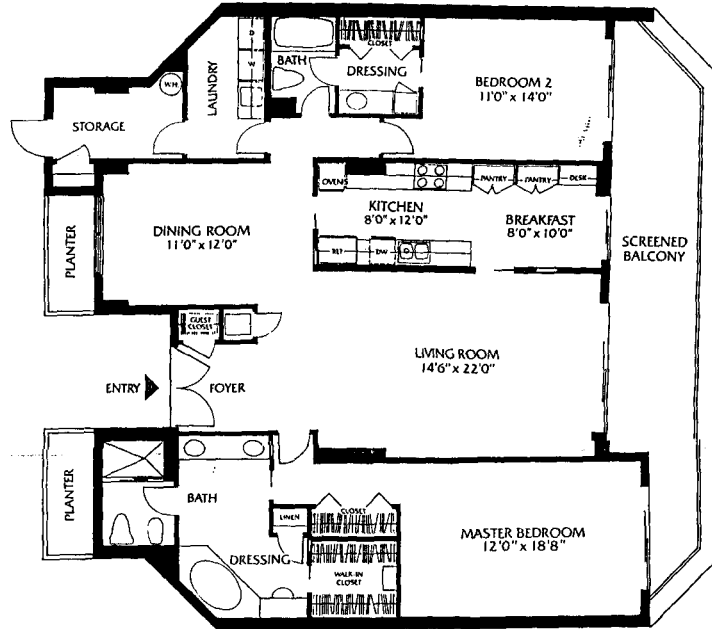
NOTES AND ARE SUBJECT TO ARCHITECTURAL AND ENGINEERING DETAILS. PLAN SUBJECT TO A PLOT SCALE.



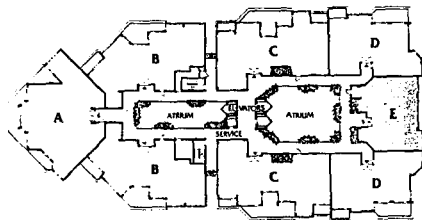
RESIDENCE TYPE B
Three Bedroom, Three Bath
 APARTMENT
 2,511 SQ. FT.
 SCREENED BALCONIES 337 SQ. FT.



RESIDENCE TYPE E
Two Bedroom, Two Bath
 APARTMENT 1,850 SQ. FT.
 SCREENED BALCONY 272 SQ. FT.



FLOOR PLANS ARE SUBJECT TO ARCHITECTURAL
 REVISIONS AND VARIANCE CONSTRUCTION VARIABLES
 PLAN DRAWN 10 X 1/8 INCH SCALE

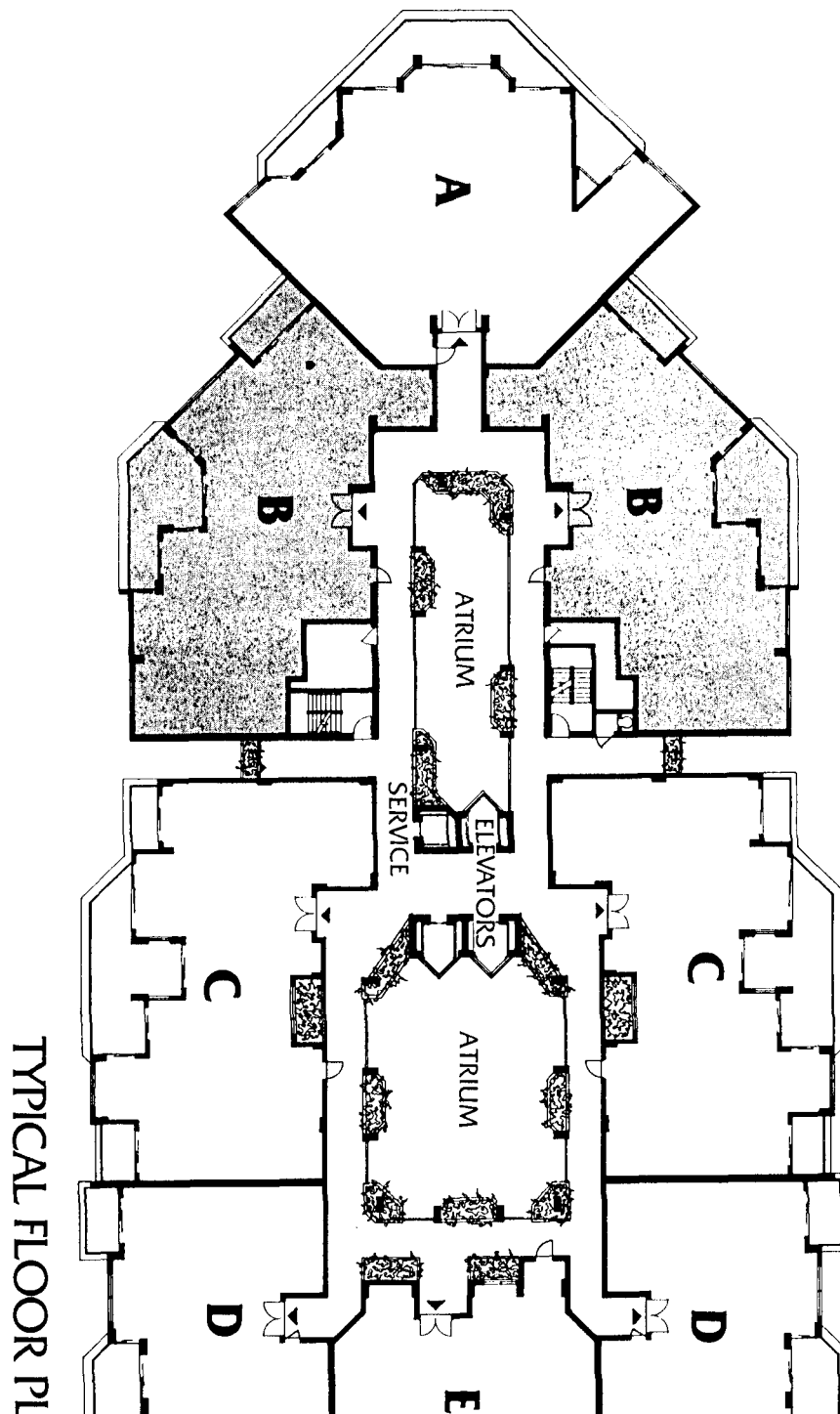


TYPICAL FLOOR PLAN



CARROLL & CARROLL

LOCATION MAP



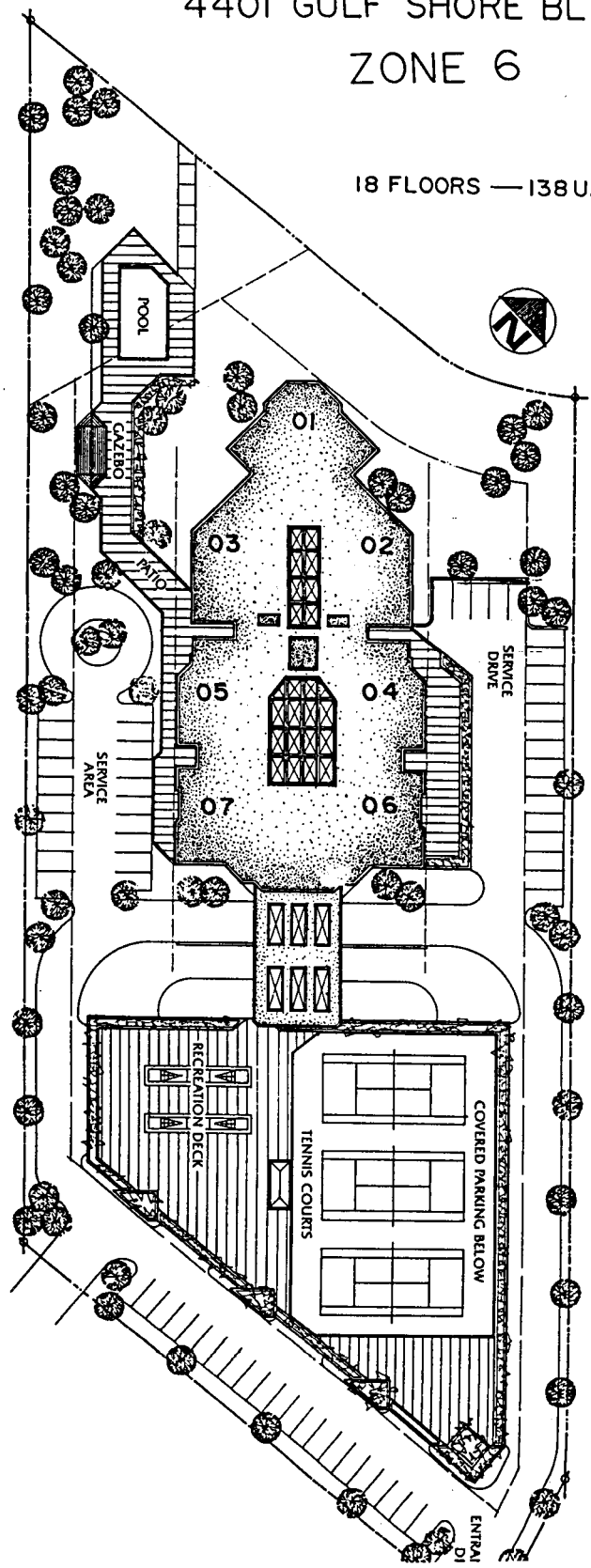
TYPICAL FLOOR PL

GULF OF MEXICO

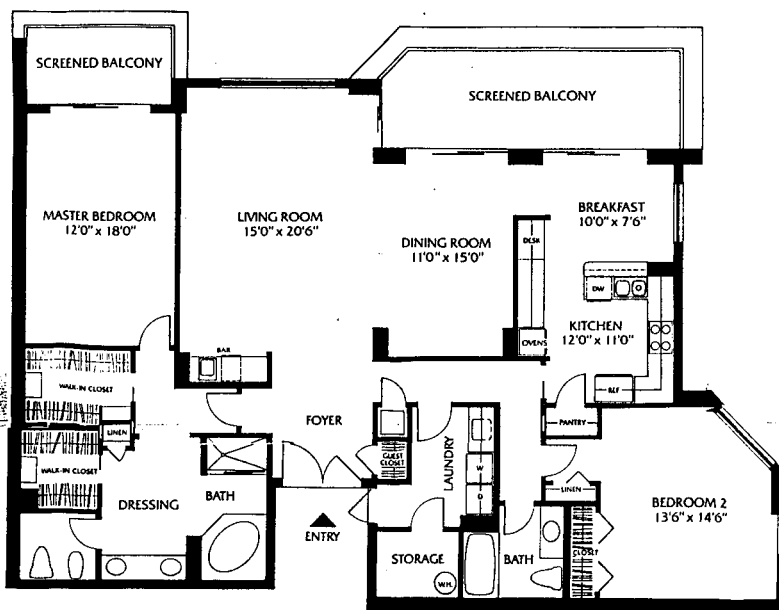
MONACO BEACH CLUB

4401 GULF SHORE BLVD. NORTH
ZONE 6

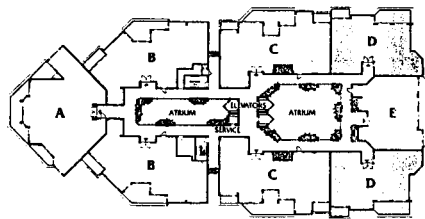
18 FLOORS — 138 UNITS



RESIDENCE TYPE D
Two Bedroom, Two Bath
 APARTMENT 2,005 SQ. FT.
 SCREENED BALCONIES 260 SQ. FT.



FLOOR PLANS ARE SUBJECT TO ARCHITECTURAL
 REVISION AND MINOR CONSTRUCTION VARIABLES
 PLAN DRAWN TO 1/8" = 1'-0" SCALE



TYPICAL FLOOR PLAN

