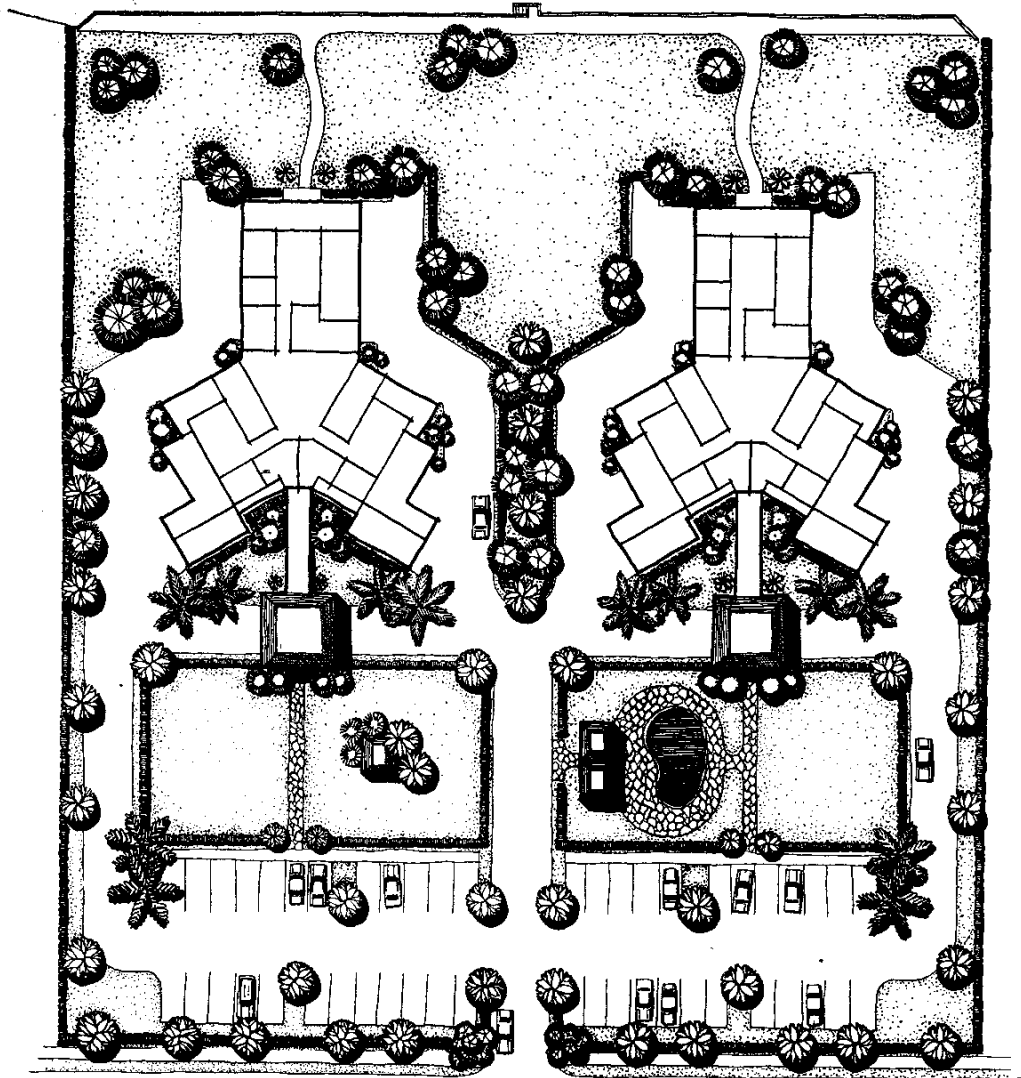


GULF OF MEXICO

BEACH



GULF SHORE BOULEVARD NORTH



SITE PLAN

HARBOR DRIVE

ORAL REPRESENTATIONS CANNOT BE RELIED UPON AS CORRECTLY STATING THE REPRESENTATIONS OF THE DEVELOPER. FOR CORRECT REPRESENTATIONS, MAKE REFERENCE TO THIS BROCHURE AND TO THE DOCUMENTS REQUIRED BY SECTION 718.503, FLORIDA STATUTES, TO BE FURNISHED BY A DEVELOPER TO A BUYER OR LESSEE.

550 FIFTH AVENUE SOUTH · NAPLES, FLORIDA 33940 · (813) 262-7131

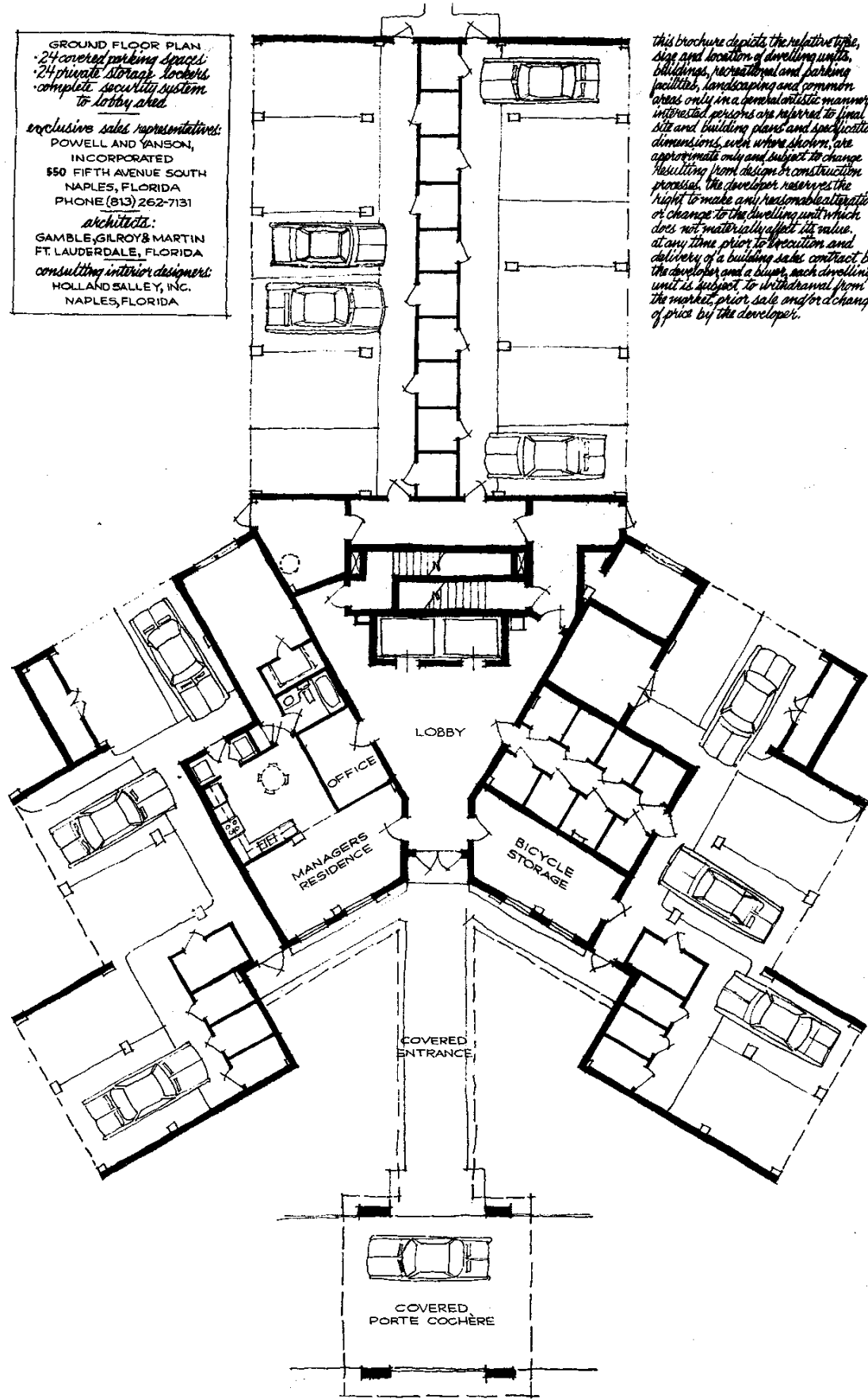
GROUND FLOOR PLAN
 • 24 covered parking spaces
 • 24 private storage lockers
 • complete security system
 to lobby area

exclusive sales representatives:
 POWELL AND YANSON,
 INCORPORATED
 550 FIFTH AVENUE SOUTH
 NAPLES, FLORIDA
 PHONE (813) 262-7131

architects:
 GAMBLE, GILROY & MARTIN
 FT. LAUDERDALE, FLORIDA

consulting interior designers:
 HOLLAND SALLEY, INC.
 NAPLES, FLORIDA

this brochure depicts the relative type, size and location of dwelling units, buildings, recreational and parking facilities, landscaping and common areas only in a generalistic manner. interested persons are referred to final site and building plans and specifications. dimensions, even where shown, are approximate only and subject to change resulting from design or construction process. the developer reserves the right to make any reasonable alteration or change to the dwelling unit which does not materially affect its value, at any time prior to execution and delivery of a building sales contract by the developer and a buyer, each dwelling unit is subject to withdrawal from the market prior sale and/or a change of price by the developer.



SITE AND GROUND FLOOR PLANS

WEST WING

WEST WING

the library-den on each floor plan is really a full bedroom with its own bath and closet. in normal use a den-office-library, it converts immediately into a third bedroom.

*west wing residences;
2525 sq. ft. of living area
500 sq. ft. of porch
3025 total square feet*

*north & south wing residences;
2563 sq. ft. of living area
382 sq. ft. of porch
2945 total square feet*

wet bar with cabinetry for storage

air conditioning units in all apartments are "outside" no one enters your apartment for normal servicing, any noise factor virtually eliminated.

all residences have a separate entry door to the kitchen.

every bedroom is completely separated from the other, not just a wall dividing the bedrooms which is so common. no wise transference here.

when entertaining, odds on either side are better for you guests

** something really different! south end of the wing through the apartment... the air goes to the west, the light of the city to the east, what a view this will be! also can you imagine the cross ventilation?*

all apartments are open on these sides, every window in every room has a view.

this closet specifically dimensioned for file cabinets

master suite has 2 full baths, 2 big walk-in closets, a complete his & hers dressing area.

oversized 6 tubs in master suites.

these large breakfast noods are bright, airy and offer a delightful view to the east.

custom kitchen for your personal color selection.

notice the large walk-in closets in all bedrooms.

north and south wings have a great view.

